

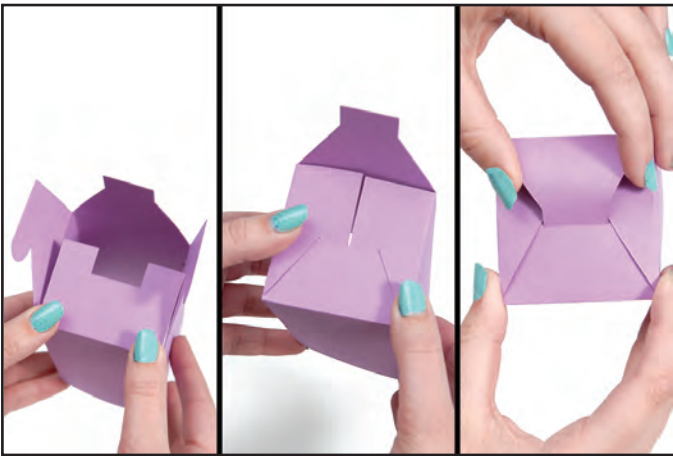
657329 Sizzix® Bigz™ Pro Die - Box w/Scallop Lid #2 by Lynda Kanase



1. Die-cut pieces and apply adhesive as shown.



2. Create the body of the Box by adhering the long tab to the opposite side.



3. Fold down the U-shaped flap. Fold the side flaps and insert the tabs into the center of the U-shaped flap. Insert the final flap as shown.

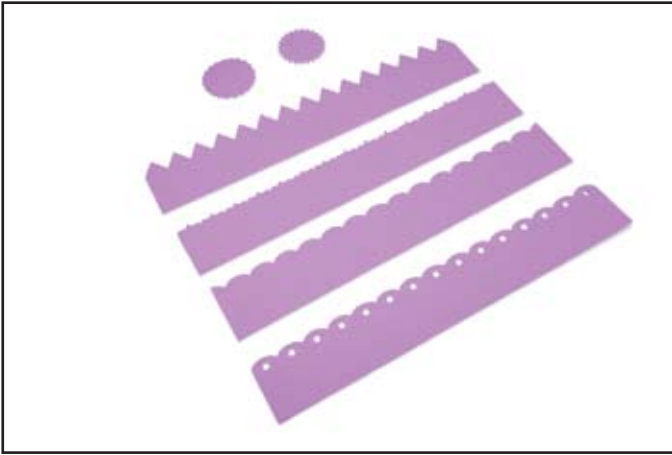


4. Create the top of the Box by adhering the tabs to the adjacent flap.

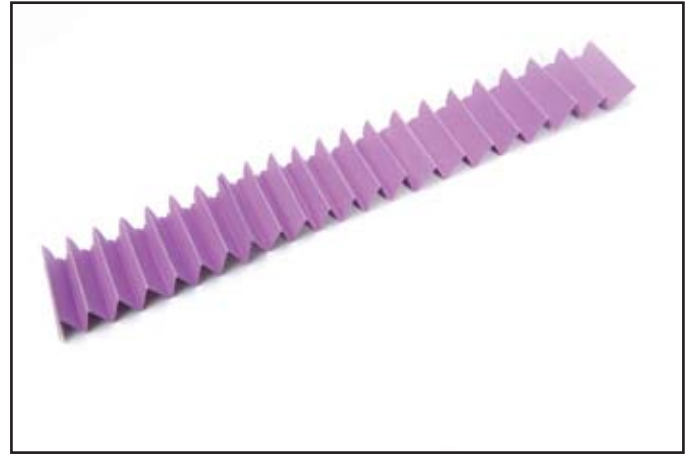


5. Embellish as desired.

657330 Sizzix® Bigz™ Pro Die - Rosettes by Beth Reames & Lynda Kanase



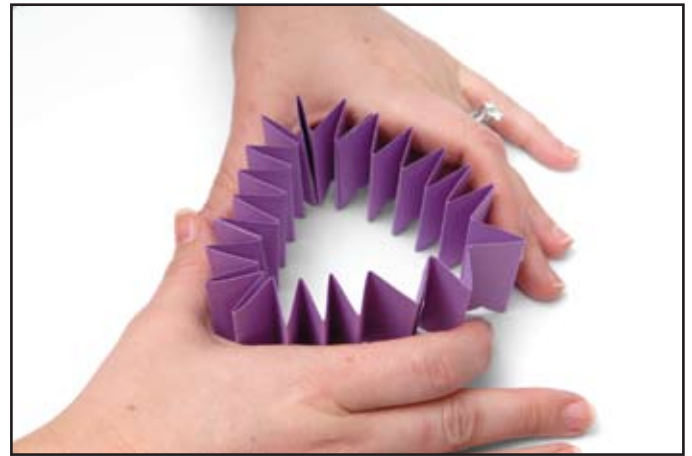
1. Die-cut pieces as shown. You will need three similar strips to create one Rosette.



2. Using a strong adhesive, connect three of the selected strips together and accordion fold the entire length.



3. Connect the two ends together to form a cylinder.



4. On a flat surface, gather the top of the cylinder tight.

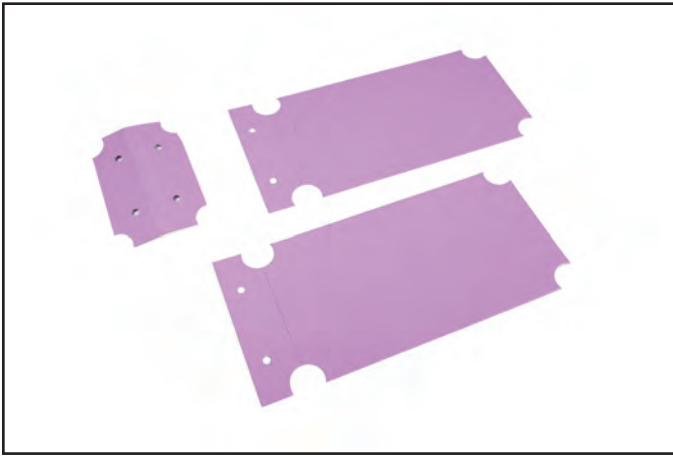


5. To create the Rosette, push down on the top of the cylinder, allowing the bottom of the cylinder to spread.



6. Use a strong adhesive to attach the Rosette to your background or to connect one of the center pieces to the back. Finish by adhering one of the center pieces to the top. Embellish as desired.

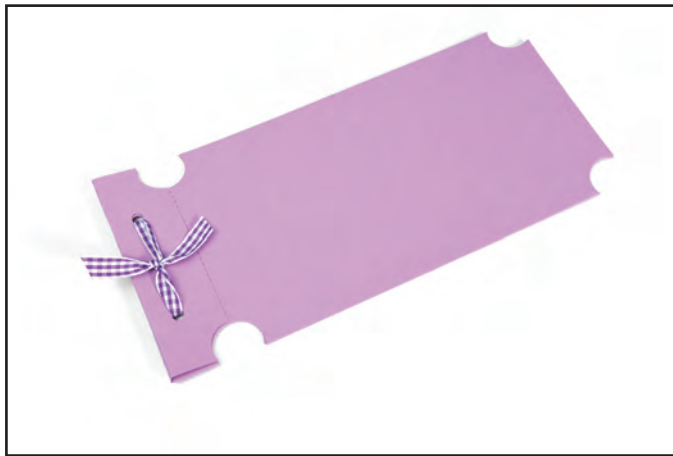
657331 Sizzix® Bigz™ Pro Die - Album, Ticket by Lynda Kanase



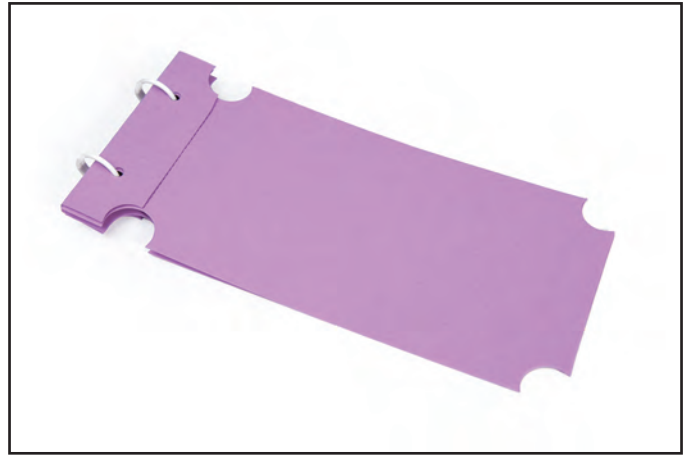
1. Die-cut pieces as shown.



2. Start by folding the Album spine.

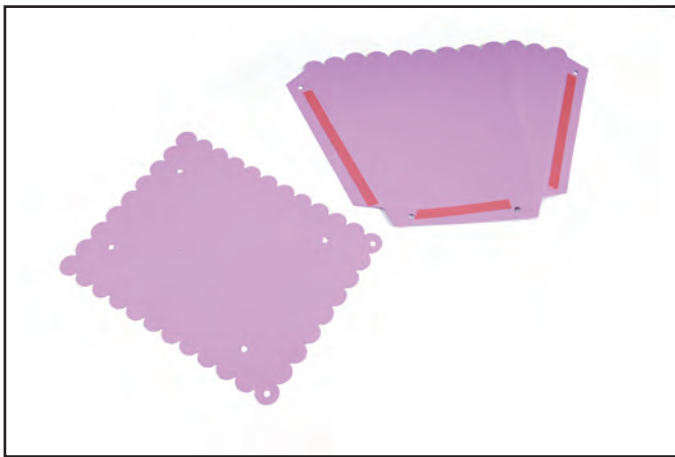


3. Insert desired pages into the folded spine and secure with a bow or rings.



4. Embellish as desired.

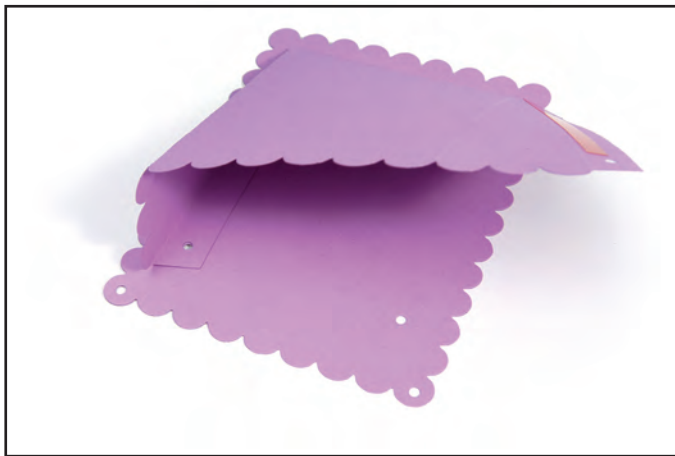
657332 Sizzix® Bigz™ Pro Die - Bag, Hanging by Lynda Kanase



1. Die-cut pieces as shown. Holes have been incorporated into this design so that either brads or adhesive may be used to assemble this die.



2. Align the holes on the bottom tab of the Bag front with the corresponding holes on the rectangular back piece and adhere or secure with brads.

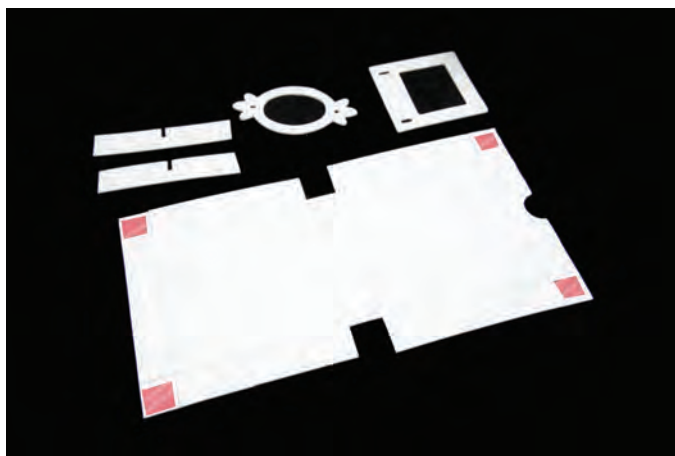


3. Align the holes on the side tabs with the corresponding holes on the rectangular back and adhere or secure with brads.

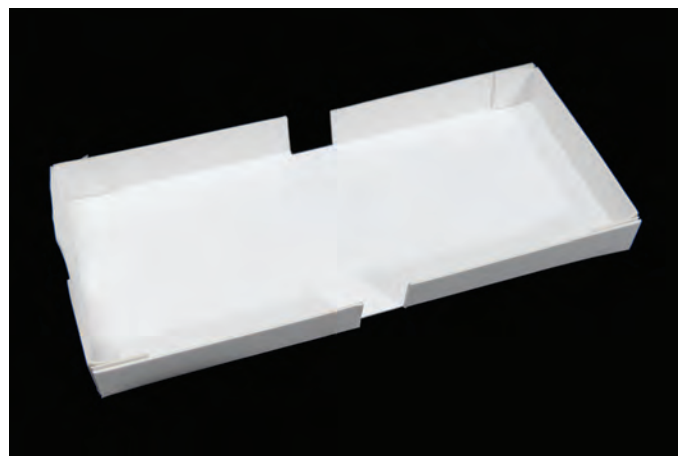


4. Embellish as desired.

657336 Sizzix® ScoreBoards™ Pro Die - Boxes, Pizza by Eileen Hull



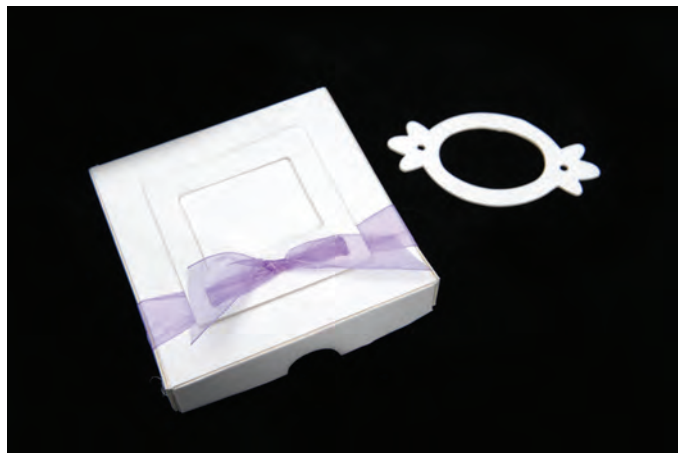
1. Die-cut pieces and place adhesive as shown.



2. Connect the corner tabs on each end to the side panels to create the top and bottom of the Box.

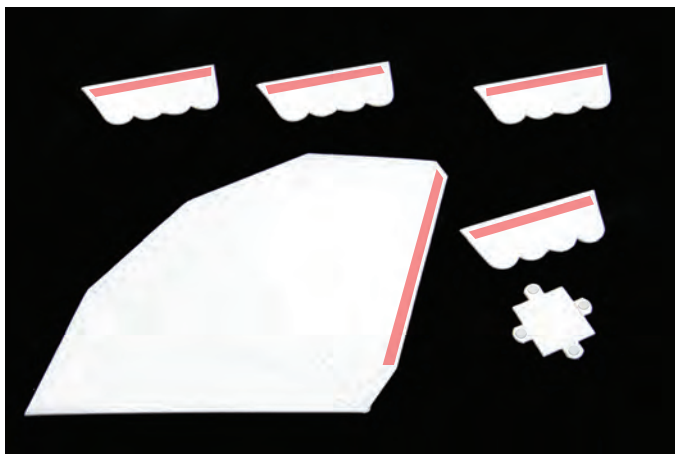


3. Assemble dividers and adhere with hot glue, if desired.

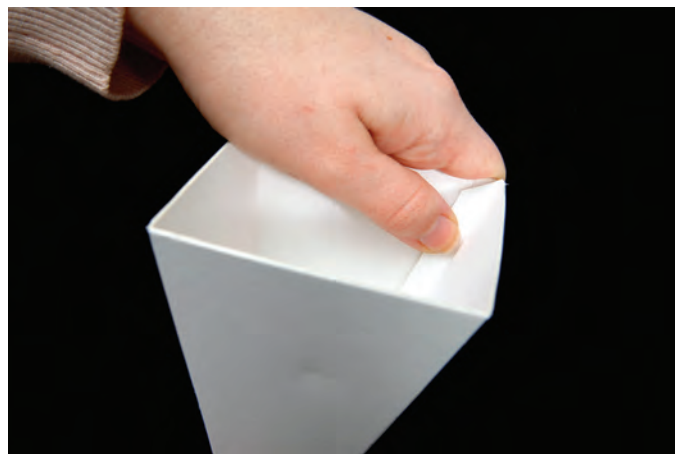


4. Both of the closure frames are designed to use ribbon or string. There are no rules as to how these should be placed or tied. Be creative!

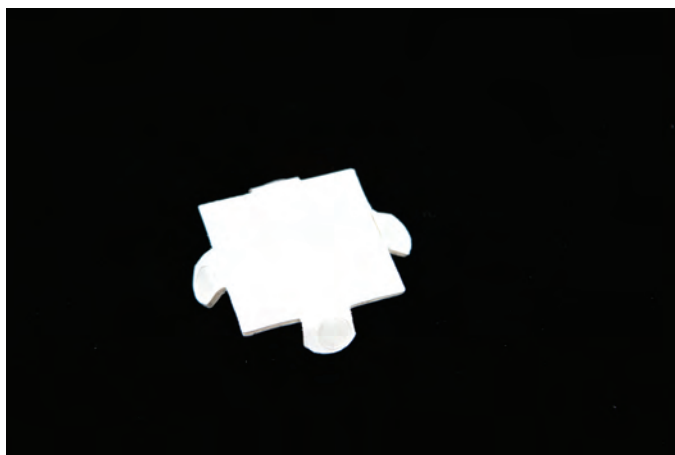
657337 Sizzix® ScoreBoards™ Pro Die - Cone by Eileen Hull



1. Die-cut pieces and apply a strong adhesive as shown.



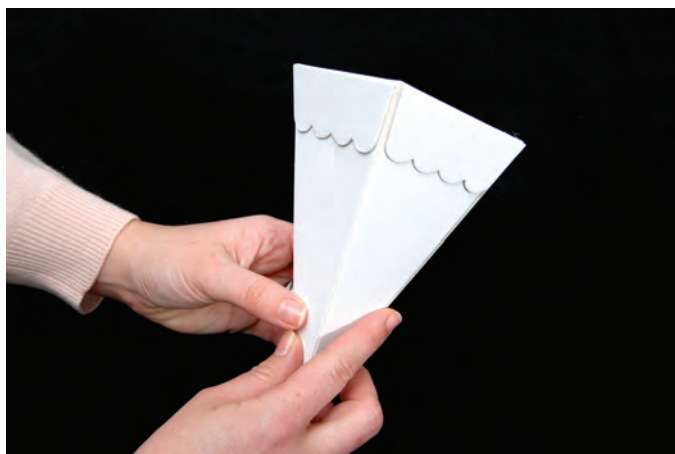
2. Fold on all four score lines and adhere the flap to the inside of the opposite side.



3. Apply a strong adhesive to the Cone support.



4. Slide the Cone support down to the bottom of the Cone until it stops. This will act as a shear wall to keep the Cone open and square.



5. Attach the scalloped trim pieces if desired and embellish.

657376 Sizzix® ScoreBoards™ XL Die - Box, Triangle by Eileen Hull



1. Die-cut piece as shown.



2. Fold the center score and the four corner scores. Bring the corners together so that they overlap to create the Box.



3. Hold the Box closed by lacing a ribbon or string through the four holes.

657379 Sizzix® ScoreBoards™ XL Die - Index Card Folder by Eileen Hull



1. Die-cut and apply adhesive to bottom flap as shown.



2. Fold the four bottom sections to create a square. Adhere the bottom flap to the back panel of the Card Folder.

